



inlandport.org

— FIND YOUR RIDE —

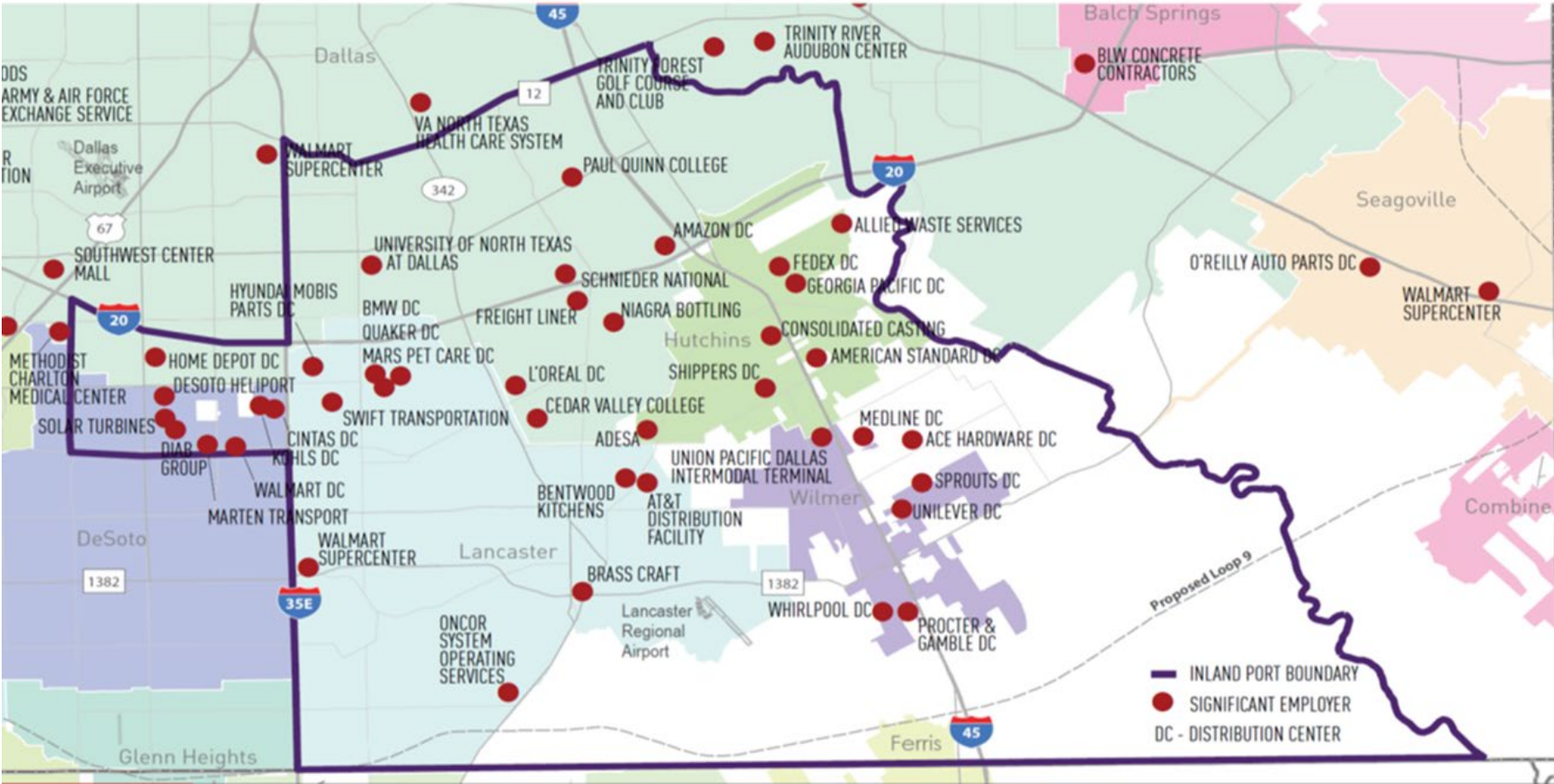
Dallas County Inland Port Transportation Management Association Services Update

October 22, 2020

Background

- May 28, 2020 - IPTMA Board adopts two new services to be implement in the Inland Port area
 - Expanded microtransit service
 - Inland Port Rides
- August 31, 2020 - IPTMA approves agreement between the DART Mobility Services Local Government Corporation (LGC) and the IPTMA for the DART LGC to provide these approved transportation services
- September 22, 2020 - DART Board approves DART LGC and the IPTMA Agreement
- September 22, 2020 – DART Board approves ILA between the DART LGC and STAR to provide the expanded microtransit
- Services are scheduled to begin on November 2, 2020

Inland Port Zone & Businesses



Inland Port TMA GoLink Service

- IPTMA GoLink provides on demand shared ride service to areas outside of the DART Service Area within the Southern Dallas County Inland Port area.
- IPTMA GoLink will be marketed under DART GoLink Program and will follow the same rules for operation in term of fare, payment, and technology.
- IPTMA GoLink operates from 5:00 AM to 8:00 PM, Monday through Friday. Service is operated by STAR Transit and supplemented by UberPool.
- Currently, GoLink Service will not operate on weekends and/or the following holidays: New Year's Day, Memorial Day, July 4, Labor Day, Thanksgiving Day, the day after Thanksgiving and Christmas Day.
- Customers can book trips via DART GoPass app or by calling STAR Call Center.

GoLink Contactless Payments

Fares can be paid using GoPass Tap card or via credit/debit card in the GoPass app or over the phone



GoPass[®] App

GoPass[®] app is loaded with amazing features to simplify your next trip! Buy, store and activate passes right on your phone.



GoPass[®] Tap Card

With the GoPass[®] Tap reloadable transit card, you never have to carry cash and you always get the best fare.

Inland Port TMA GoLink Fares

One Way Pass

(one-way only, point A to point B)

Local \$2.50

Reduced \$1.25

Midday Pass (9:30am – 2:30pm)

Local \$2.00

AM/PM Passes

Local \$3.00

Reduced \$1.50

Monthly Passes

Local \$96.00

Reduced \$48.00

Regional \$192.00

Day Passes

Local \$6.00

Reduced \$3.00

Regional \$12.00

Meet Liz

It's 6AM and Liz needs to get from her house in Desoto to her job at Home Depot. She does not have the GoPass app, so she calls 877-631-5278 to book her trip. The reservationist tells her she can use a credit card, debit card or GoPass Tap card to cover her fare. Liz chooses to pay with her GoPass Tap card, and the reservationist tells her a GoLink vehicle will arrive in 32 minutes. When Liz boards the vehicle, her card receives a "virtual tap" and is charged \$2.50 since the One-Way GoLink fare is the best fare to cover her trip.

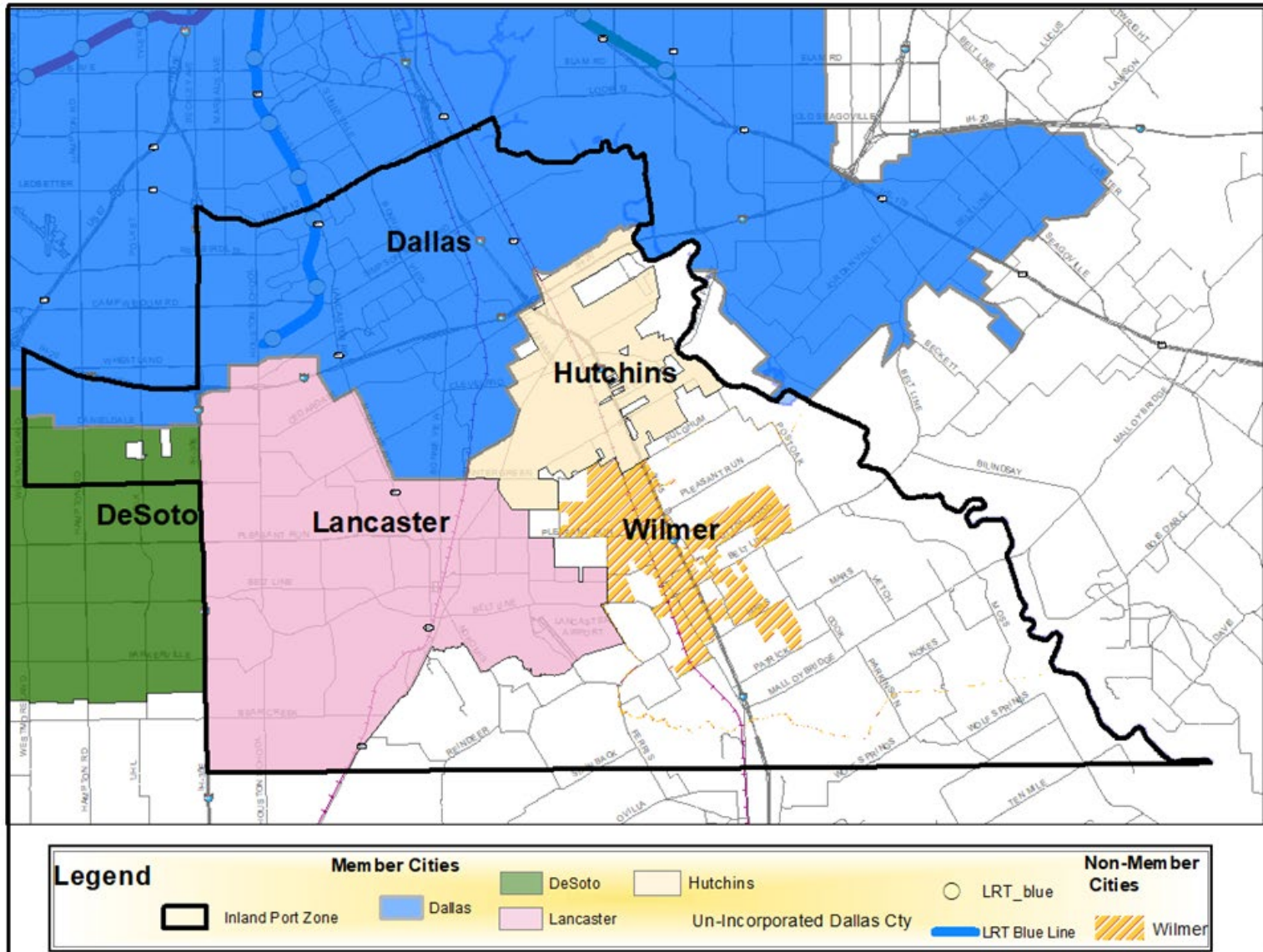


Meet Michael

It's 7 P.M. and Michael needs to get from his job at Proctor & Gamble to UNT Dallas Station to continue on the Blue Line to his home in Garland. He begins planning a trip in the GoPass app and sees that a GoLink vehicle can drop him off at the station within 25 minutes, and that the fare would be covered by his existing active day pass used that morning. Michael continues booking his GoLink trip via the app.



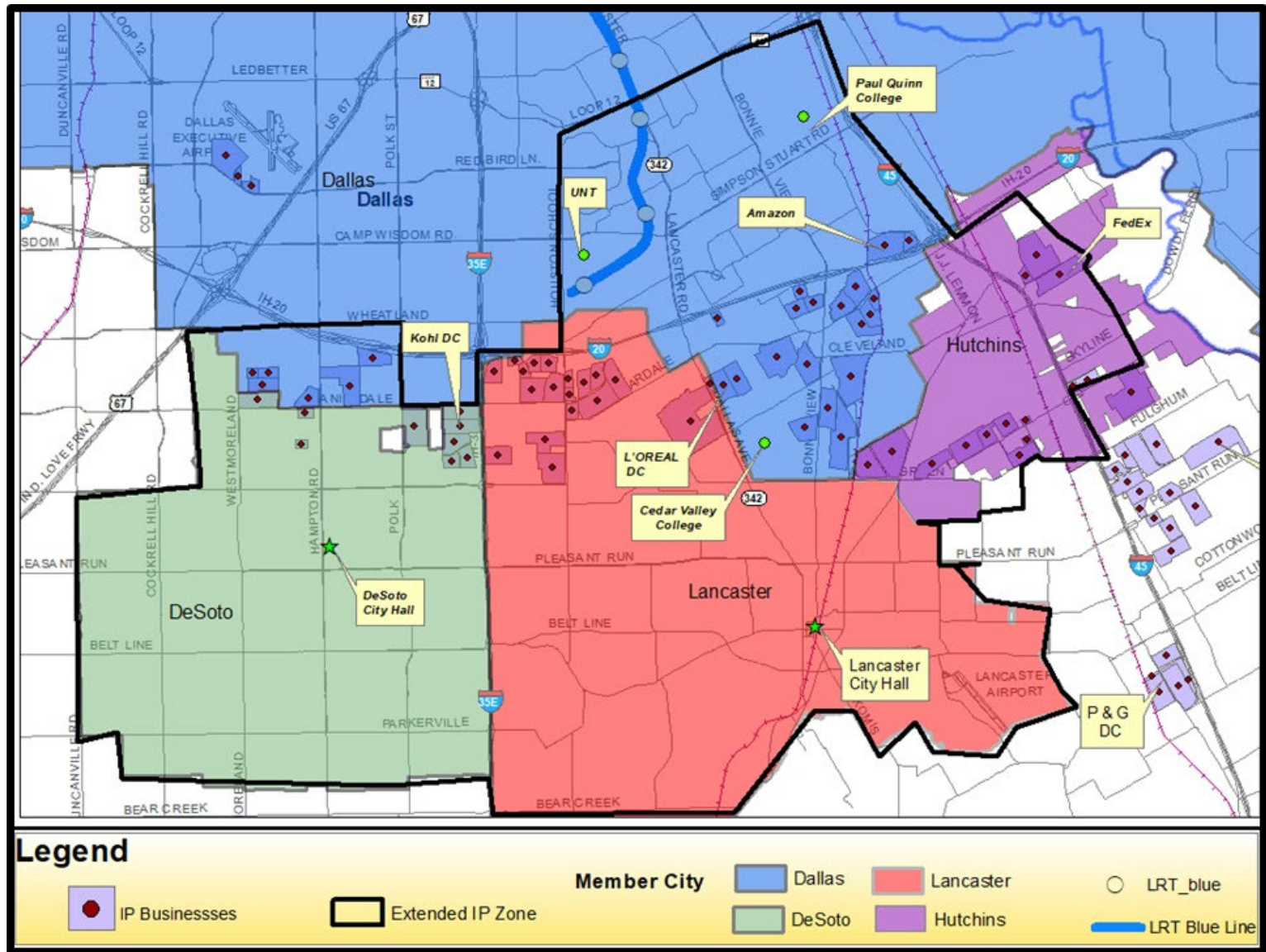
Inland Port TMA GoLink Zone



Inland Port Rides Service

- Inland Port Rides is a late night rider assistance program offered to eligible employees of IPTMA business members.
- IPTMA will subsidize \$3 to each qualified trip.
 - Trips must originate or end in at a designated Inland Port TMA member location.
- Eligible riders will book their trips via Uber App and choose UberX service to receive the \$3 discount.
- Inland Port Rides operates from 8:00 PM to 5:00 AM, Monday through Friday.
- Currently, Inland Port Rides will not operate on weekends and/or the following holidays: New Year's Day, Memorial Day, July 4, Labor Day, Thanksgiving Day, the day after Thanksgiving and Christmas Day.
- Initial budget limits Inland Port Riders to 42 trips each month for each rider.

Inland Port Rides Zone





inlandport.org

— FIND YOUR RIDE —